

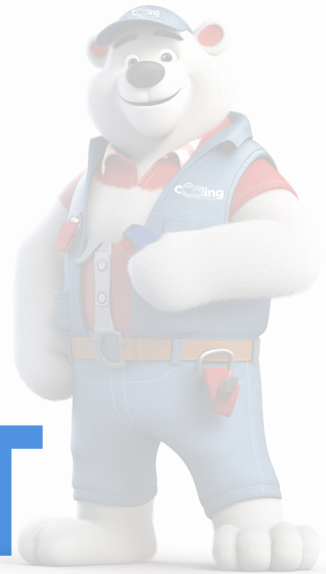


# ELBIT

COMBINED FROZEN CABINET WITH GLASS DOOR TOP



# ELBIT



COMBINED FROZEN CABINET WITH GLASS DOOR TOP





### Benefits & Specifications:

- Complimentary upper and lower sections
- Lower section gives easy, ergonomic access
- Upper section for display and storage
- Ideal for bulk presentations
- Accommodates a wide variety of products
- Makes product replenishment quick and easy
- Practical fittings designed for simplified installation and maintenance
- Designed for modular configurations
- Combined sections save on operating cost

### Dimensions (mm):

Height : 2050 / 2200

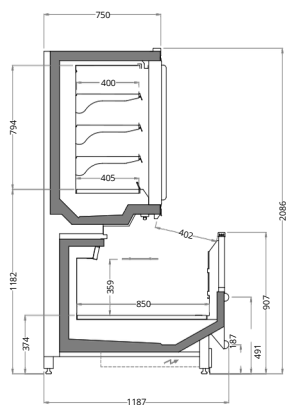
Length : 1875 / 2500 / 3750

Depth : 1187

SYSTEM	OPERATING TEMP. °C	REFRIGERANT
REMOTE	-22 / -24	HFC blend HFC/HFO blend CO <sub>2</sub>

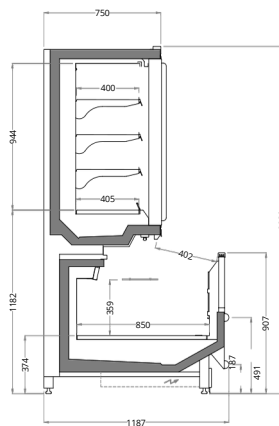
HFC: R407A / R407F / R404A • HFC/HFO BLEND: R448A / R449A / R452A • CO<sub>2</sub>: R744

# TECHNICAL DATA



**ELBIT DC V3 2050**

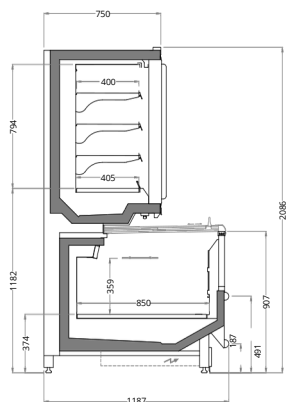
Length mm	1875	2500	3750
Doors	3	4	6



**ELBIT DC V3 2200**

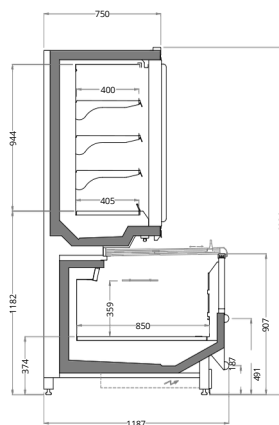
Length mm	1875	2500	3750
Doors	3	4	6

## Elbit with Sliding Cover



**ELBIT DC V3 2050**

Length mm	1875	2500	3750
Doors	3	4	6



**ELBIT DC V3 2200**

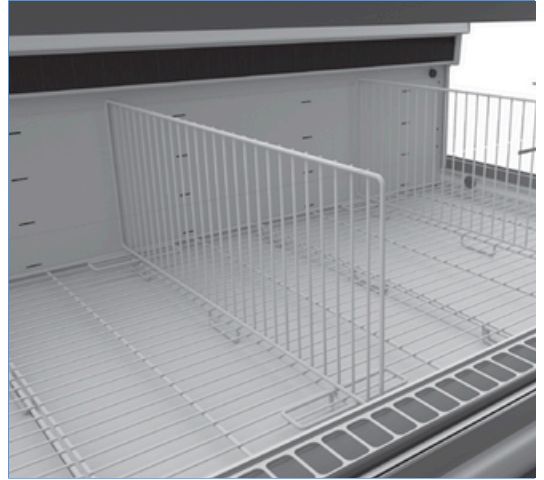
Length mm	1875	2500	3750
Doors	3	4	6



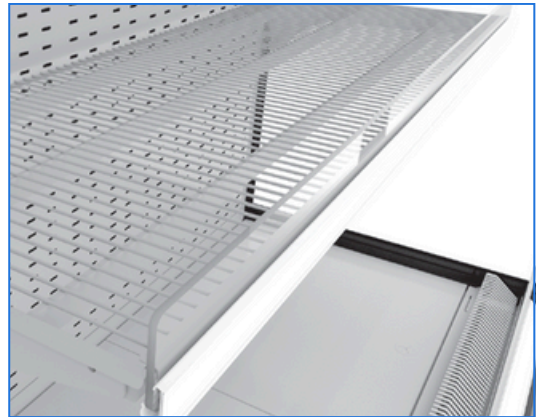
# ACCESSORIES



ALUMINIUM GLASS DOOR



WIRE PRODUCT DIVIDER



WIRE SHELVES

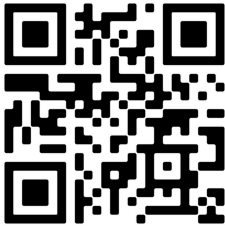
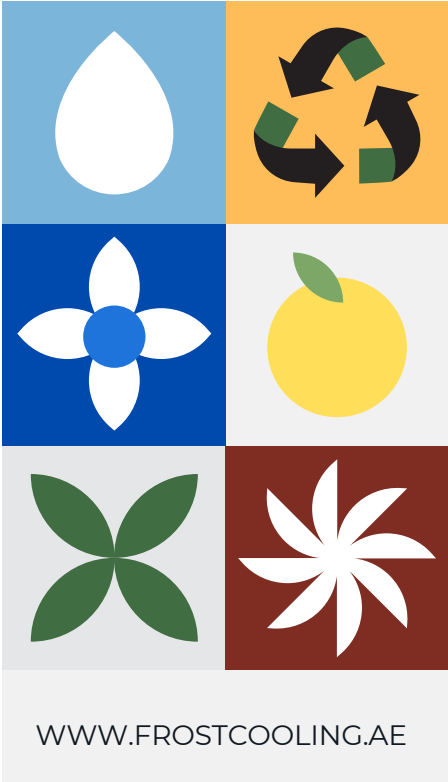


SIDE PANEL



BASE GRIDS

# WHERE QUALITY MEETS RELIABILITY



FROST COOLING TRADING  
SALES: +971 58 553 8232  
OFFICE: +971 58 520 5232  
EMAIL: SALES@FROSTCOOLING.AE