



# FREST DW

ISLAND FREEZERS





# FREST DW

ISLAND FREEZER





**Benefits & Specifications:**

- Easy access and ergonomic design
- Fully configurable to different concepts
- Ideal for wide variety of food presentations
- Easily adaptable to changes of product
- Designed for modular configurations
- Increased display area
- Low operating costs
- Simplified maintenance



**FREST SC\* WIDE**  
**Dimensions (mm):**  
 Height : 1034  
 Length : 1875 / 2500 / 3750  
 2045 (End Cabinet)  
 Depth : 2045

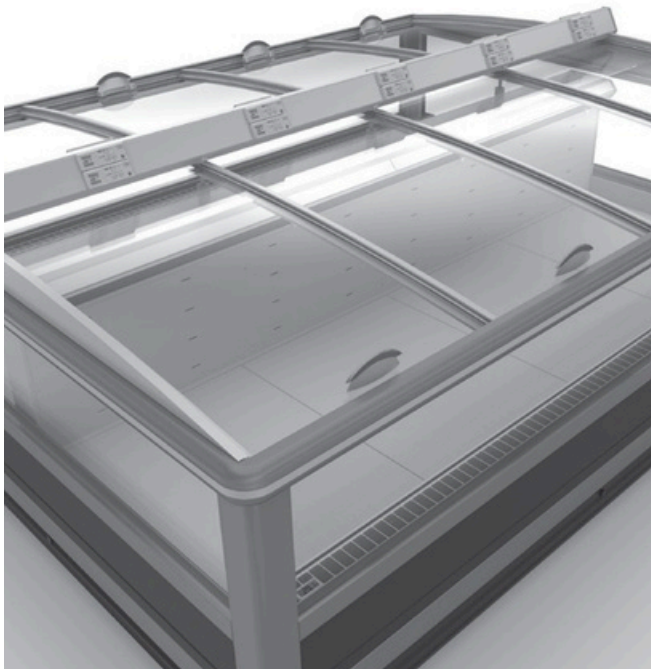
**FREST DC\* WIDE**  
**Dimensions (mm):**  
 Height : 1034  
 Length : 1875 / 2500 / 3750  
 2045 (End Cabinet)  
 Depth : 2045

SYSTEM	OPERATING TEMP. °C	REFRIGERANT
REMOTE	-22 / -24	HFC blend HFC / HFO blend CO <sub>2</sub>

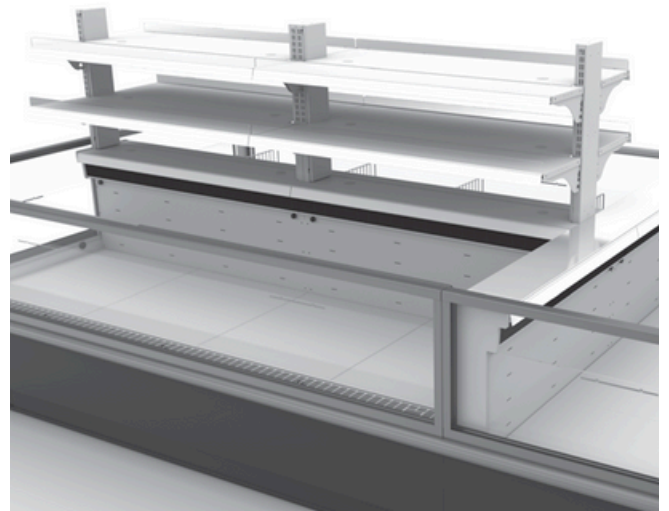
HFC: R407A / R407F / R404A • HFC / HFO: R448A / R449A / R452A • CO<sub>2</sub>: R744

\* **SC**: Single Coil  
 \* **DC**: Double Coil

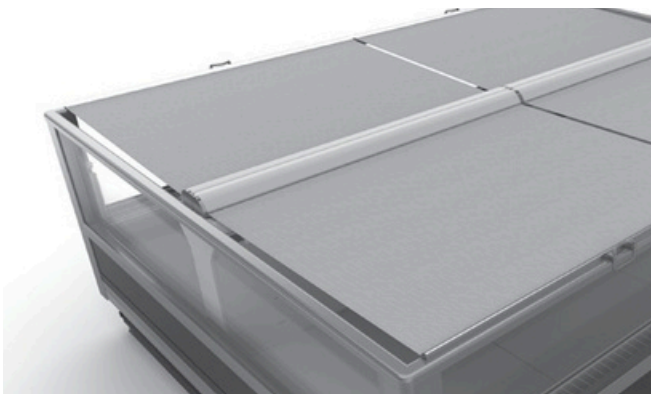
# ACCESSORIES



SLIDING COVER



SUPER STRUCTURE

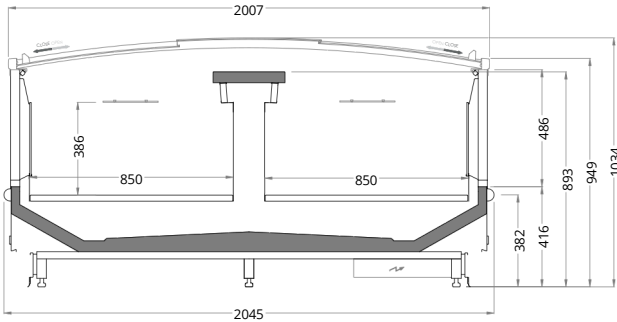


NIGHT BLIND



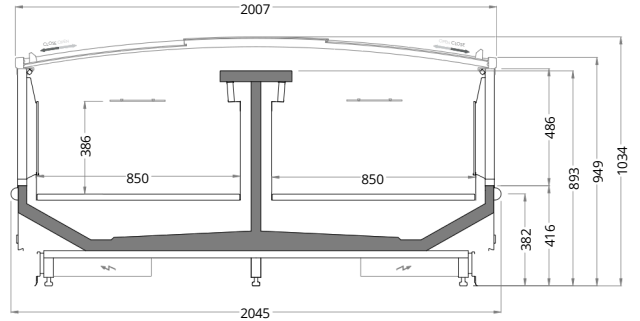
WIRE TRAY & PRODUCT DIVIDER

# TECHNICAL DATA



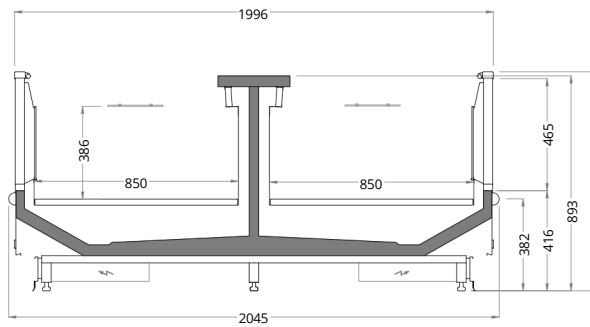
**FREST SC\* WIDE with LIDS**

Length mm | 1875 | 2500 | 3750



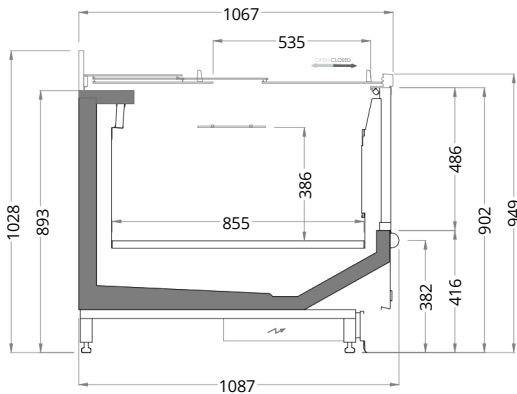
**FREST DC\* WIDE with LIDS**

Length mm | 1875 | 2500 | 3750



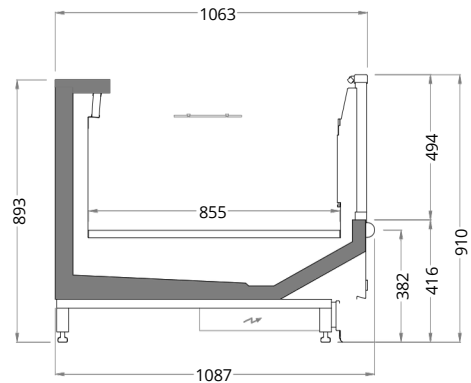
**FREST DC\* WIDE w/o LIDS**

Length mm | 1875 | 2500 | 3750



**FREST 2045 HC with LIDS**

Length mm | 2045

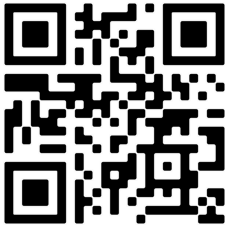
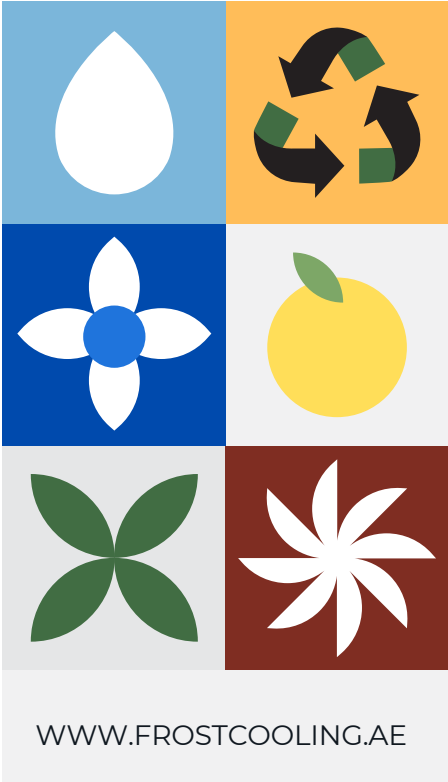


**FREST 2045 HC w/o LIDS**

Length mm | 2045

\* SC: Single Coil  
\* DC: Double Coil

# WHERE QUALITY MEETS RELIABILITY



FROST COOLING TRADING  
SALES: +971 58 553 8232  
OFFICE: +971 58 520 5232  
EMAIL: SALES@FROSTCOOLING.AE