



FREST SC

ISLAND FREEZERS





Benefits & Specifications:

- Easy access and ergonomic design
- Fully configurable to different concepts
- Ideal for wide variety of food presentations
- Easily adaptable to changes of product
- Designed for modular configurations
- Increased display area
- Low operating costs
- Simplified maintenance

**FREST SC* WIDE
Dimensions (mm):**

Height : 1034
 Length : 1875 / 2500 / 3750
 2045 (End Cabinet)
 Depth : 2045

**FREST DC* WIDE
Dimensions (mm):**

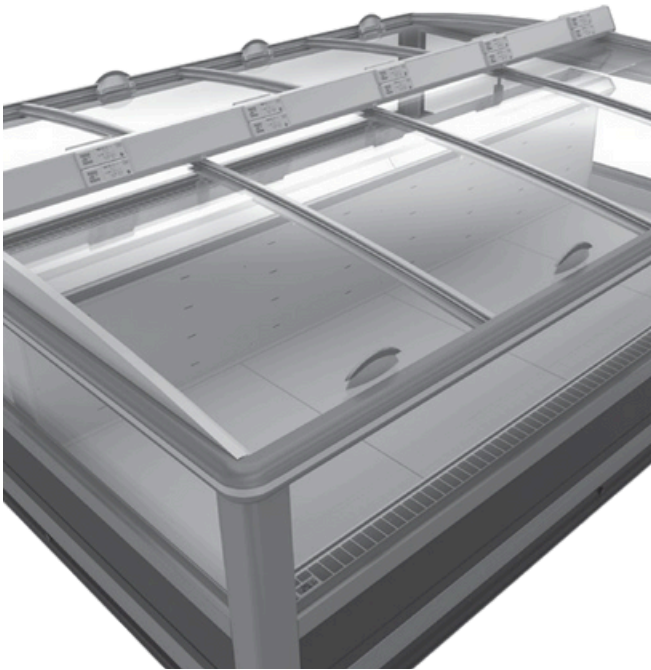
Height : 1034
 Length : 1875 / 2500 / 3750
 2045 (End Cabinet)
 Depth : 2045

SYSTEM	OPERATING TEMP. °C	REFRIGERANT
REMOTE	-22 / -24	HFC blend HFC / HFO blend CO ₂

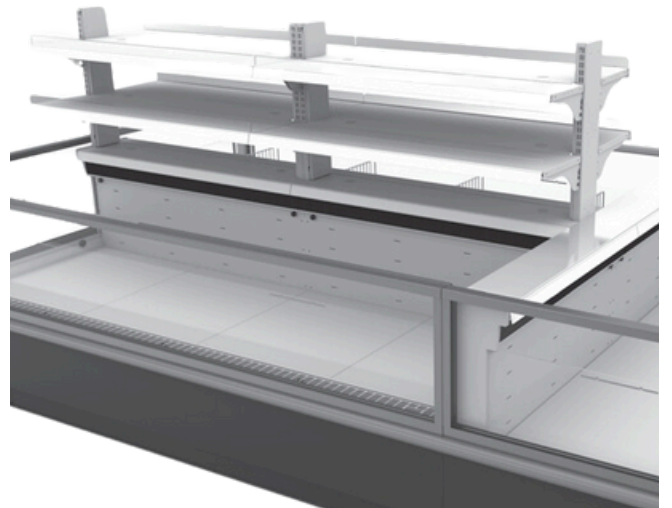
HFC: R407A / R407F / R404A • HFC / HFO: R448A / R449A / R452A • CO₂: R744

* SC: Single Coil
 * DC: Double Coil

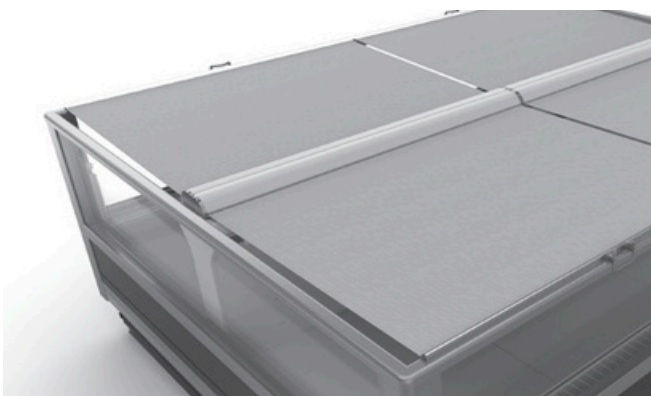
ACCESSORIES



SLIDING COVER



SUPER STRUCTURE

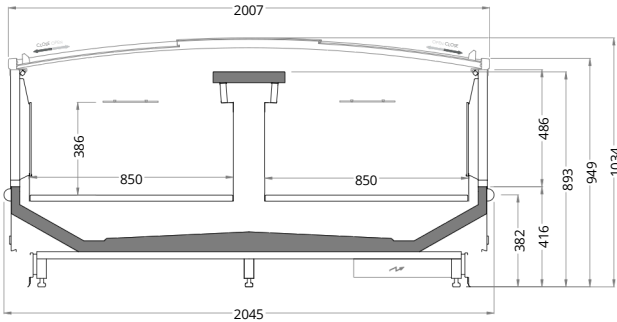


NIGHT BLIND



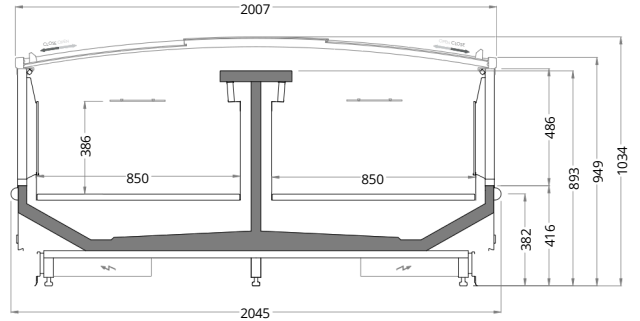
WIRE TRAY & PRODUCT DIVIDER

TECHNICAL DATA



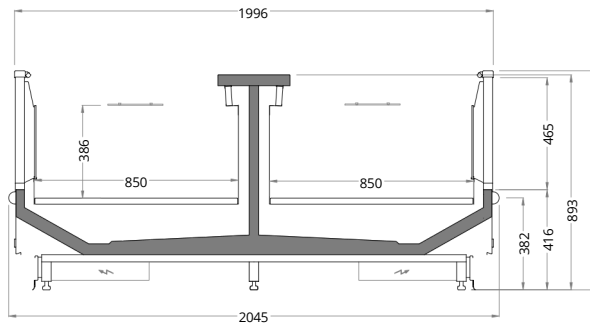
FREST SC* WIDE with LIDS

Length mm | 1875 | 2500 | 3750



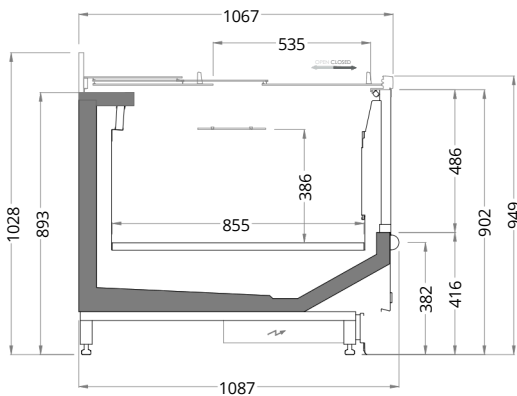
FREST DC* WIDE with LIDS

Length mm | 1875 | 2500 | 3750



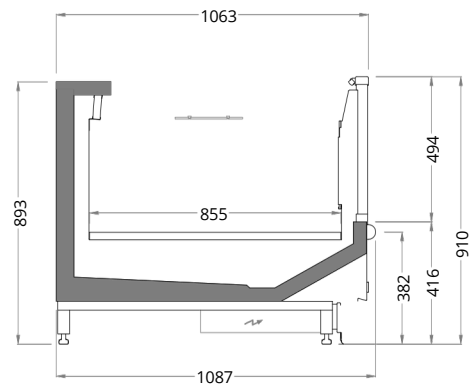
FREST DC* WIDE w/o LIDS

Length mm | 1875 | 2500 | 3750



FREST 2045 HC with LIDS

Length mm | 2045

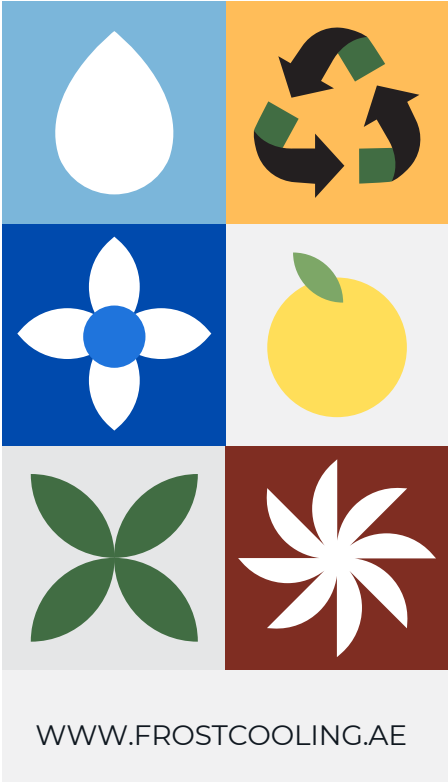


FREST 2045 HC w/o LIDS

Length mm | 2045

* SC: Single Coil
* DC: Double Coil

WHERE QUALITY MEETS RELIABILITY



FROST COOLING TRADING
SALES: +971 58 553 8232
OFFICE: +971 58 520 5232
EMAIL: SALES@FROSTCOOLING.AE