



NACRE

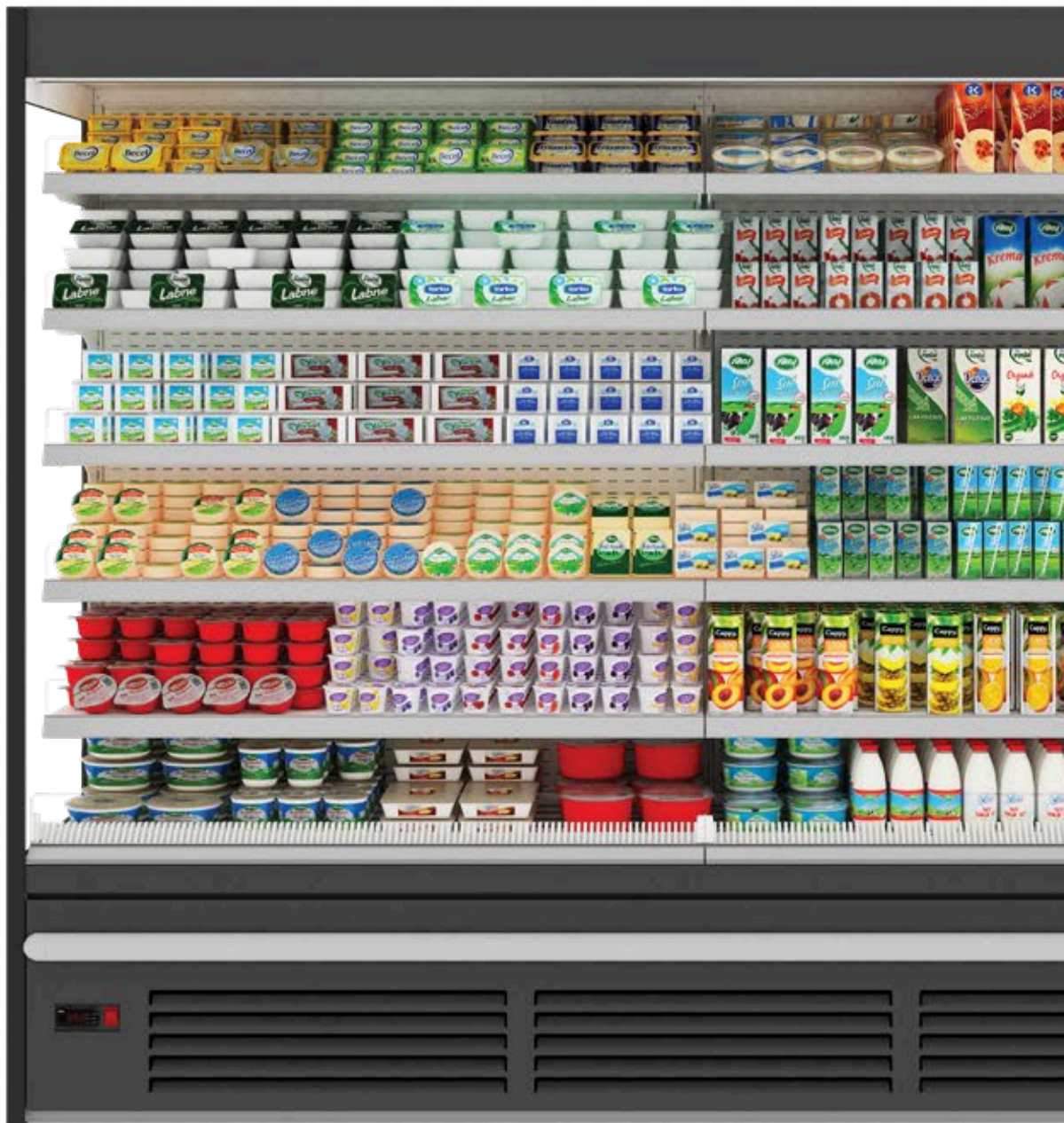
VERTICAL INTEGRAL CABINET





NACRE

VERTICAL INTEGRAL CABINET





Benefits & Specifications:

- Small footprint with compact design
- Easy access and ergonomic design
- Fully configurable to different concepts
- Easily adaptable to changes of product
- Efficient in energy consumption with higher evaporation temperature
- Low operating costs
- Practical fittings designed for simplified installation and maintenance

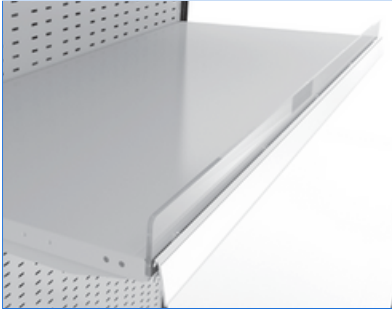
Dimensions (mm):

Height : 2072
 Length : 1250 / 1875 / 2500
 Depth : 778

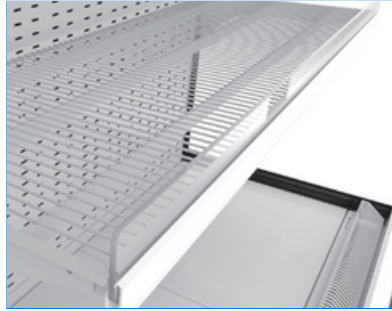
| SYSTEM | OPERATING TEMP. °C | REFRIGERANT |
|---------|-------------------------------|------------------------------------|
| PLUG-IN | -1 / +1 +2 / +4 +4 / +6 | HC HFC blend HFC / HFO blend |

HC: R290 / R1270 • HFC: R407A / R407F / R134a / R404A • HFC / HFO: R448A / R449A / R452A / R450A

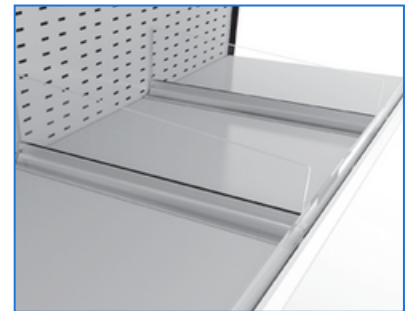
ACCESSORIES



SOLID SHELF



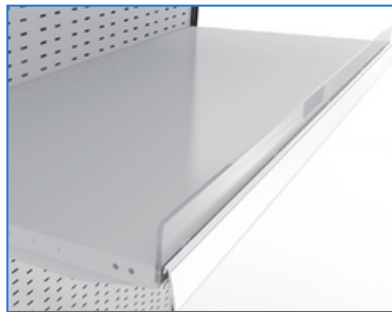
WIRE SHELF



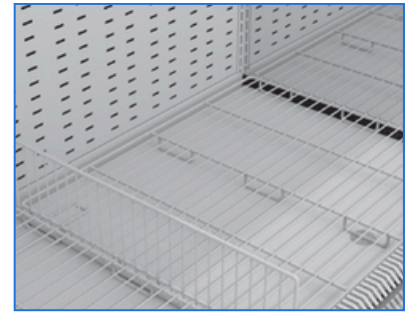
PLEXI PRODUCT DIVIDER



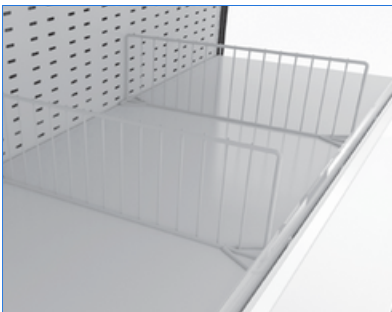
WIRE SHELF RISER



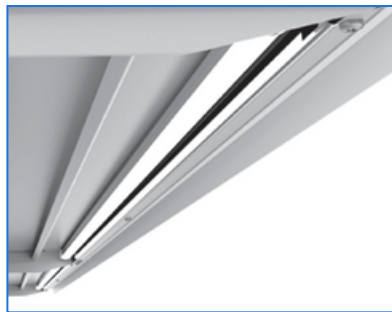
PLEXI SHELF RISER



WIRE BASE TRAY
WIRE BASE PRODUCT DIVIDER



WIRE PRODUCT DIVIDER



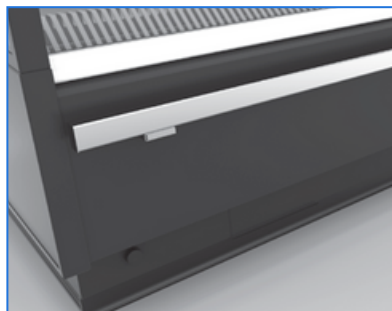
SHELF LIGHTING



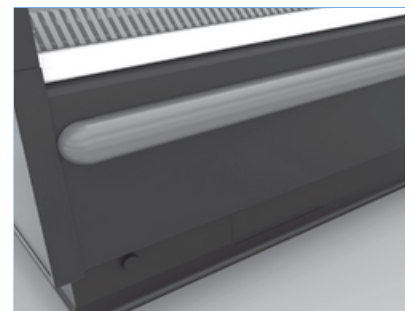
HOOK BAR



WIRE BASKET



STAINLESS STEEL BUMPRAIL

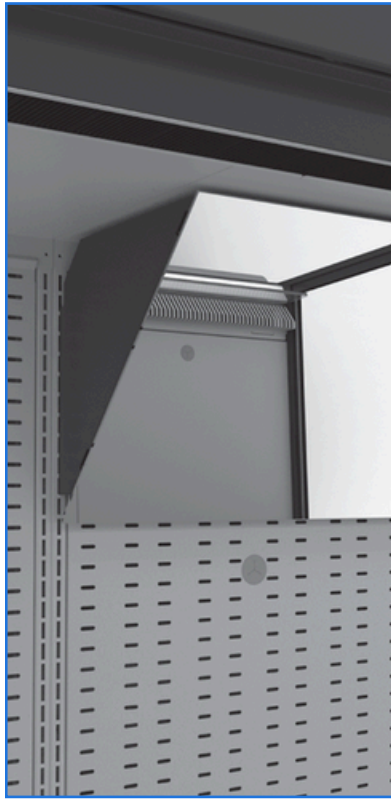


PLASTIC BUMPRAIL





NIGHT BLIND



MIRROR (FV & MT)



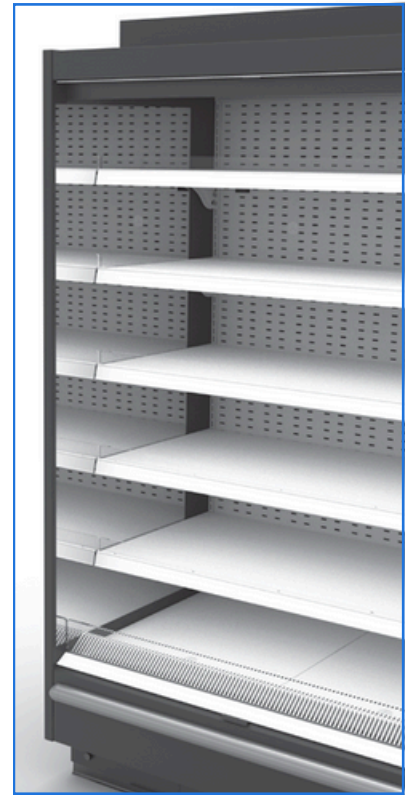
ACRYLIC SYSTEM DIVIDE



PANAROMIC SIDE PANEL

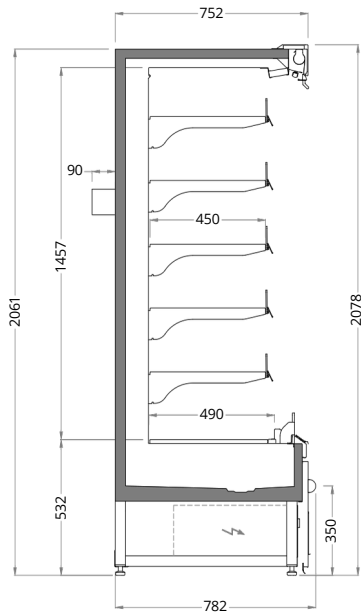


INTERMEDIATE SIDE PANEL



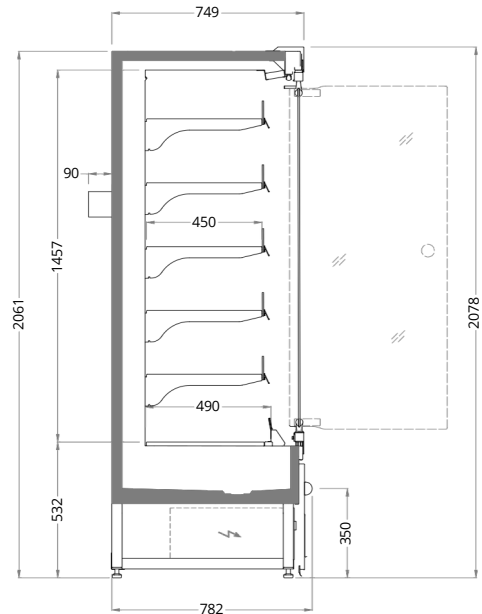
MIRRORED SIDE PANEL

TECHNICAL DATA



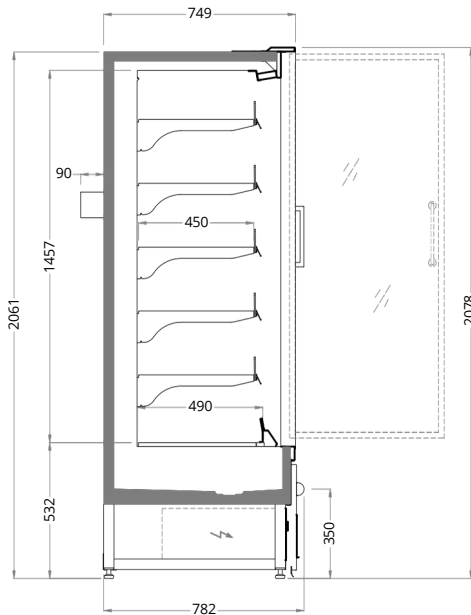
NACRE

| | | | |
|-----------|------|------|------|
| Length mm | 1250 | 1875 | 2500 |
|-----------|------|------|------|



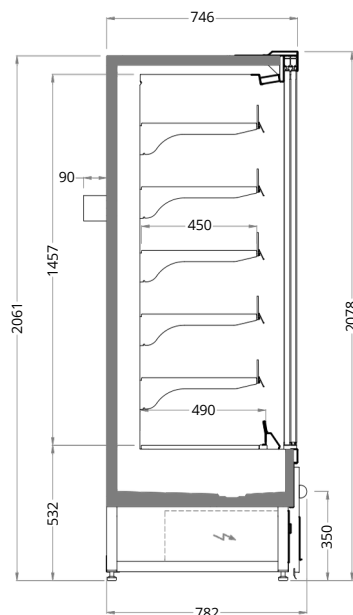
NACRE with Single Glass Hinged Doors

| | | | |
|-----------|------|------|------|
| Length mm | 1250 | 1875 | 2500 |
| Doors | 2 | 3 | 4 |



NACRE with Double Glass Hinged Doors

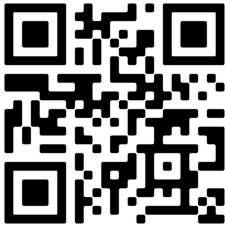
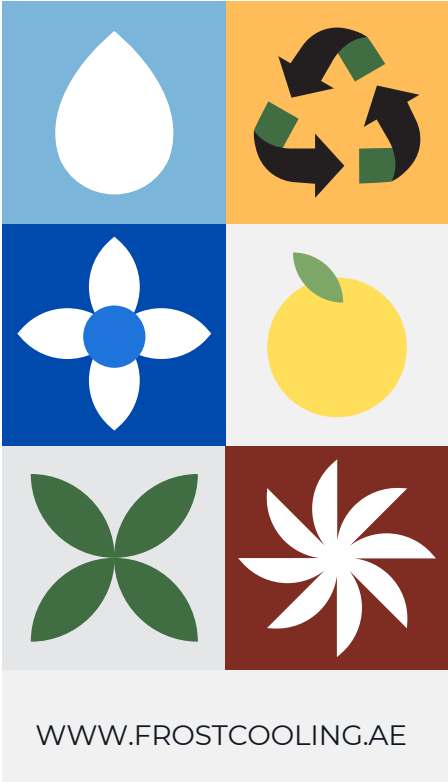
| | | | |
|-----------|------|------|------|
| Length mm | 1250 | 1875 | 2500 |
| Doors | 2 | 3 | 4 |



NACRE with Sliding Doors

| | | | |
|-----------|------|------|------|
| Length mm | 1250 | 1875 | 2500 |
| Doors | 2 | 3 | 4 |

WHERE QUALITY MEETS RELIABILITY



FROST COOLING TRADING
SALES: +971 58 553 8232
OFFICE: +971 58 520 5232
EMAIL: SALES@FROSTCOOLING.AE