



ODENSE

VERTICAL WIDE MULTI-DECK



ODENSE

VERTICAL WIDE MULTI-DECK

VERTICAL WIDE MULTI-DECK

ODENSE offers ideal solutions for display and sale of pre-packed meat, delicatessen and ready meals products.

ODENSE is a dynamic model with its surrounding stylish lines and an ideal choice for all types of applications from hypermarkets to convenience stores.

ODENSE is designed to make the products highly visible and easily accessible to the customer.





Benefits & Specifications:

- Augmented display area
- Ideal for wide variety of food presentations
- Optional oriel display for niche product
- Dynamic lighting
- More for less energy



Dimensions (mm):

Height : 2050 / 2200

Length : 1250 / 1875 / 2500 / 3750 / 2136 (NRW) (HC) / 2300 (HC)

Depth : 1080 / 1185 / 1000 (HC)

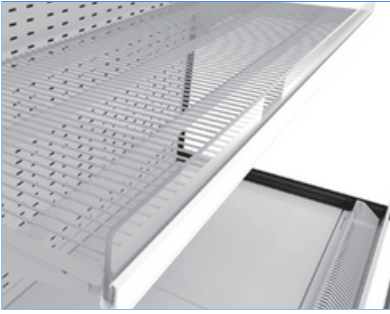
SYSTEM	OPERATING TEMP. °C	REFRIGERANT
REMOTE	-1 / +1	HFC blend HFC/HFO blend
	-1 / +1 +2 / +4 (for RIM)	CO ₂ GLYCOL/WATER

HFC: R407A / R407F / R134a / R404A • HFC/HFO: R448A / R449A / R452A / R450A
CO₂: R744 • GLYCOL/WATER: R718

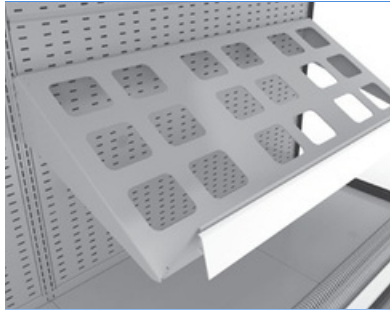
ACCESSORIES



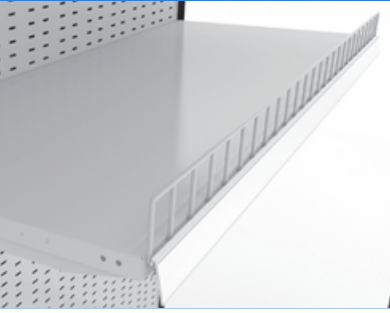
SOLID SHELF



WIRE SHELF



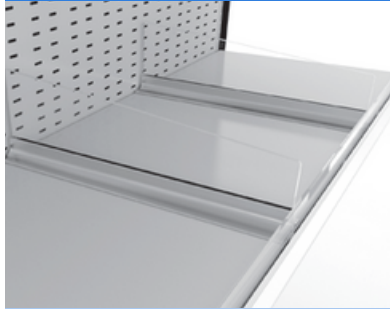
RACK SHELF



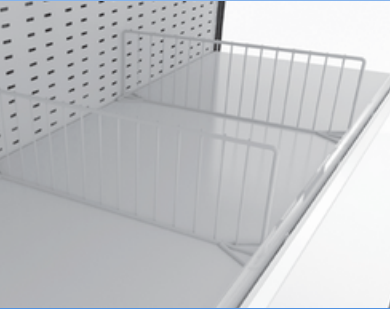
WIRE SHELF RISER



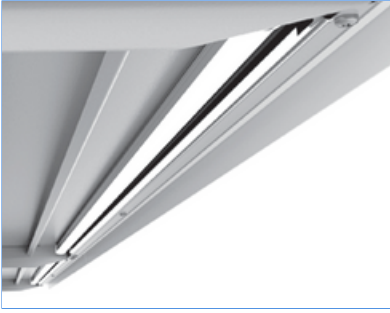
PLEXI SHELF RISER



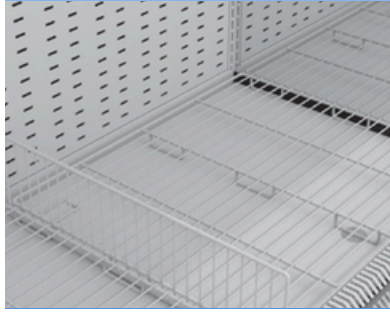
PLEXI PRODUCT DIVIDER



WIRE PRODUCT DIVIDER



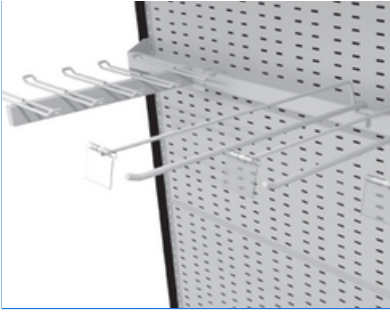
SHELF LIGHTING



WIRE BASE TRAY
WIRE BASE PRODUCT DIVIDER



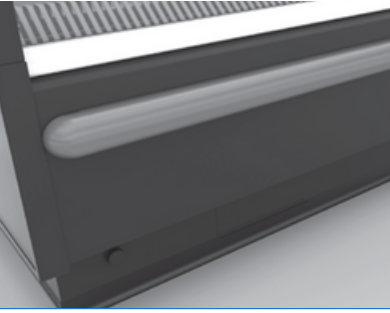
WIRE BASKET



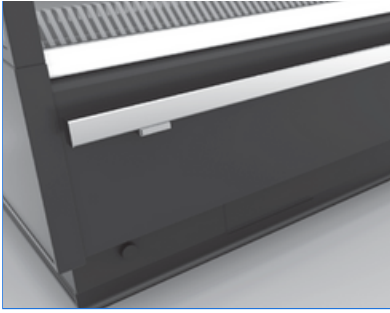
HOOK BAR



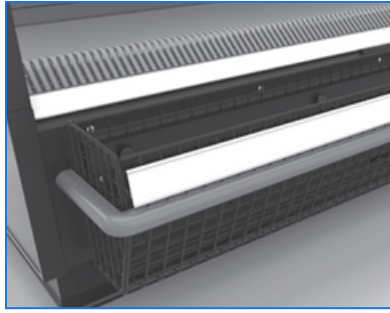
CABINET UPSTAND



PLASTIC BUMPRAIL



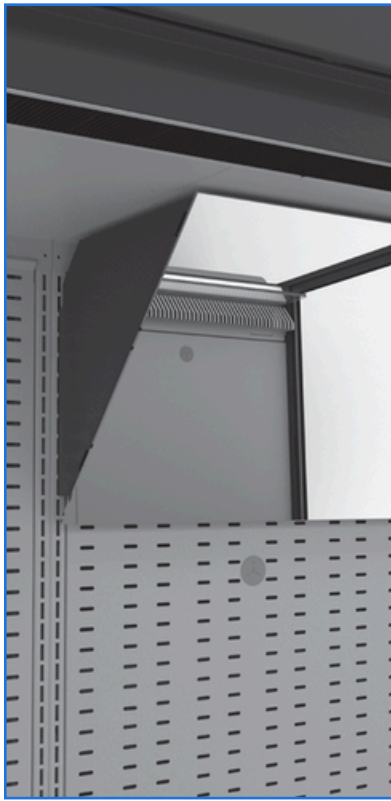
STAINLESS STEEL BUMPRAIL



BASE FRONT CRISP BASKET



NIGHT BLIND



MIRROR (FV & MT)



ACRYLIC SYSTEM DIVIDE



PANAROMIC SIDE PANEL

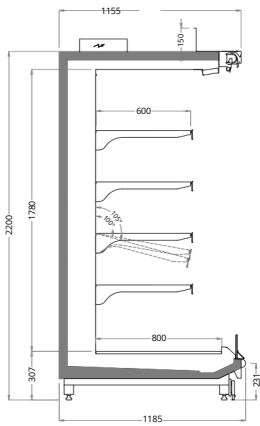


INTERMEDIATE SIDE PANEL



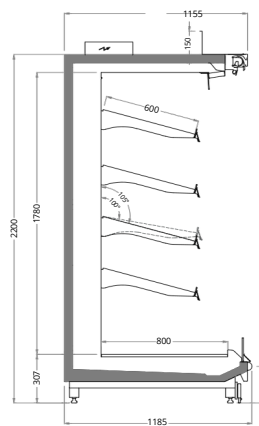
MIRRORED SIDE PANEL

TECHNICAL DATA



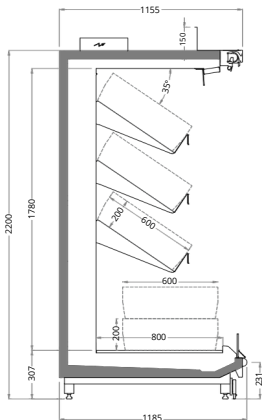
ODENSE DAIRY CABINET

Length mm | 1250 | 1875 | 2500 | 3750



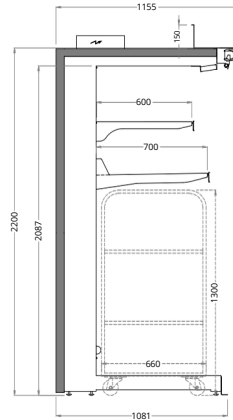
ODENSE MEAT CABINET

Length mm | 1250 | 1875 | 2500 | 3750



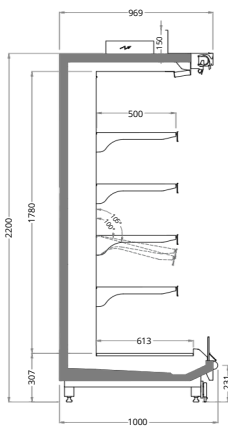
ODENSE PRODUCE CABINET

Length mm | 1250 | 1875 | 2500 | 3750



ODENSE MILK CABINET

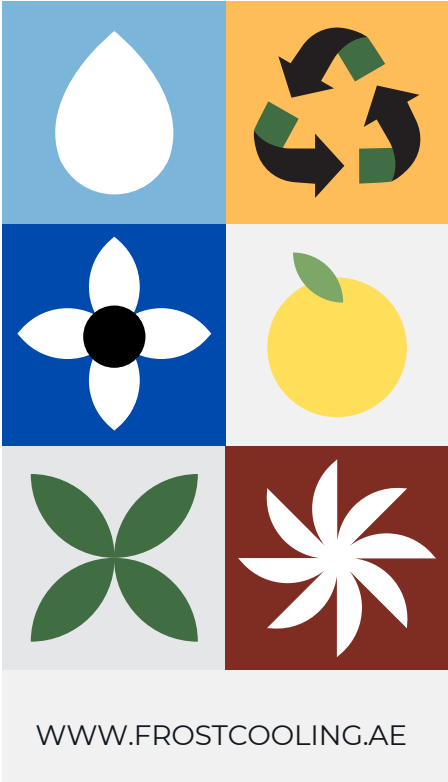
Length mm | 2500 | 3750



ODENSE DAIRY CABINET HEADCASE

Length mm | 1875 | 2300 |

WHERE QUALITY MEETS RELIABILITY



FROST COOLING TRADING
SALES: +971 58 553 8232
OFFICE: +971 58 520 5232
EMAIL: SALES@FROSTCOOLING.AE