



ONYX

VERTICAL MULTI-DECK





Benefits & Specifications:

- User-friendly
- Simplified maintenance
- Easy access and ergonomic design
- Designed for modular configurations
- Large display area
- Easily adapted to retrofit projects

Dimensions (mm):

Height : 2050 / 2200

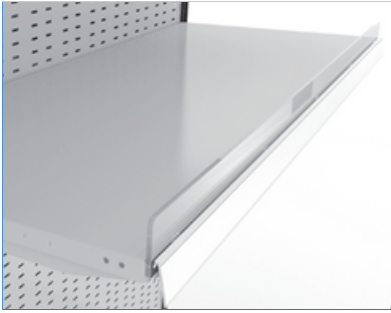
Length : 1250 / 1875 / 2136 (HC) / 2500 / 2812,5 / 3125 / 3750

Depth : 950 / 1020 / 1120

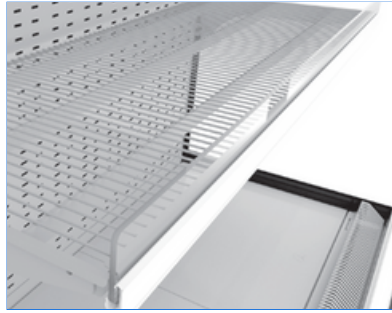
SYSTEM	OPERATING TEMP. °C	REFRIGERANT
REMOTE	-1 / +1 +2 / +4 +4 / +6	HFC blend HFC/HFO blend CO ₂ GLYCOL/WATER

HFC: R407A / R407F / R134a / R404A • HFC/HFO: R448A / R449A / R452A / R450A
CO₂: R744 • GLYCOL/WATER: R718

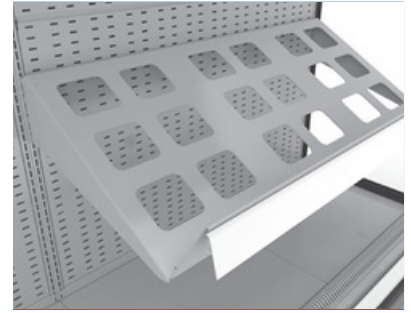
ACCESSORIES



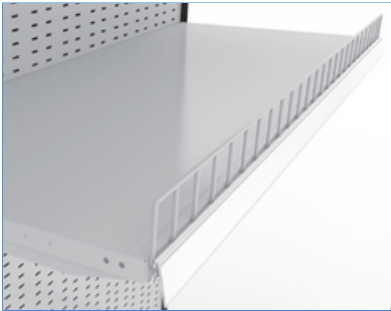
SOLID SHELF



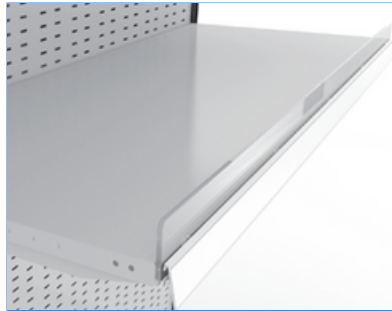
WIRE SHELF



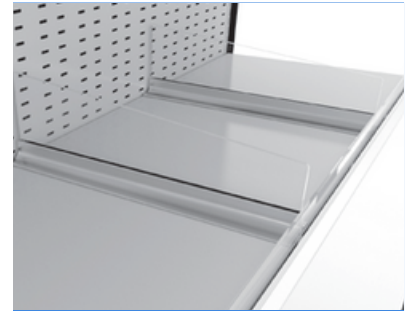
RACK SHELF



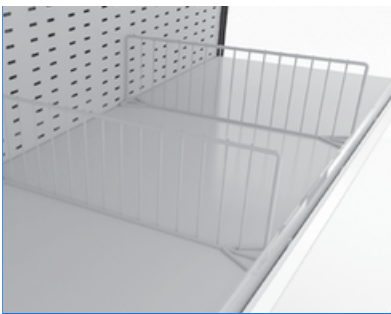
WIRE SHELF RISER



PLEXI SHELF RISER



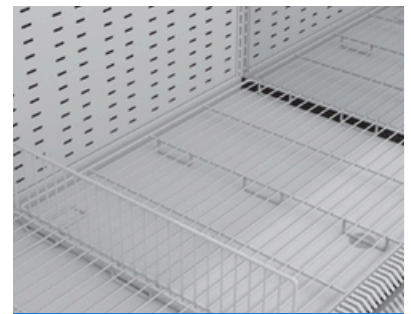
PLEXI PRODUCT DIVIDER



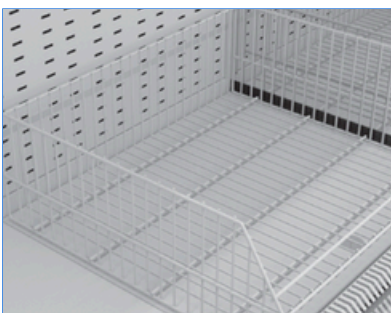
WIRE PRODUCT DIVIDER



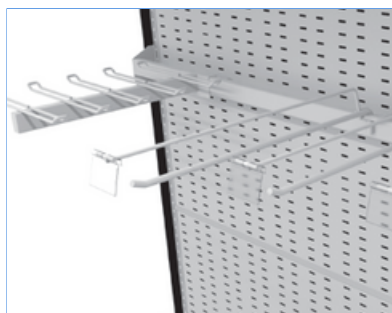
SHELF LIGHTING



WIRE BASE TRAY
WIRE BASE PRODUCT DIVIDER



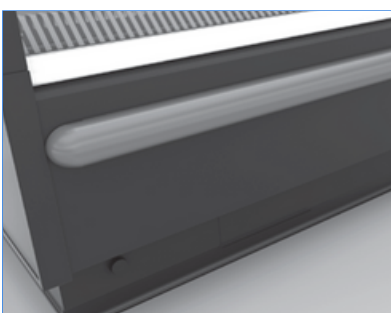
WIRE BASKET



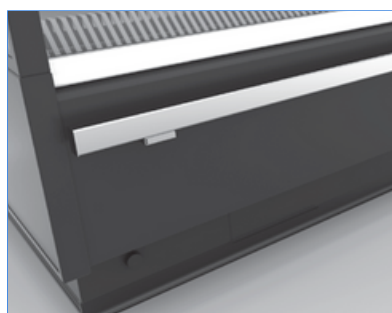
HOOK BAR



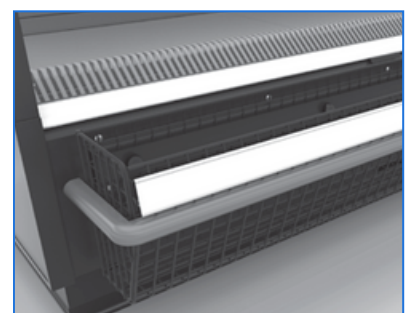
CABINET UPSTAND



PLASTIC BUMPRAIL



STAINLESS STEEL BUMPRAIL



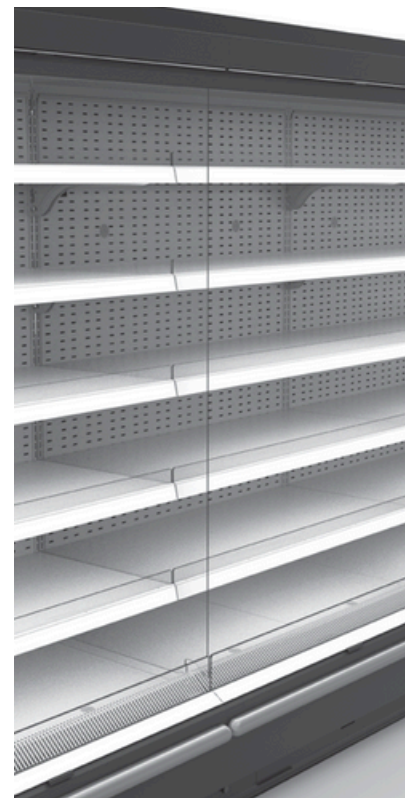
BASE FRONT CRISP BASKET



NIGHT BLIND



MIRROR (FV & MT)



ACRYLIC SYSTEM DIVIDE



PANAROMIC SIDE PANEL



INTERMEDIATE SIDE PANEL

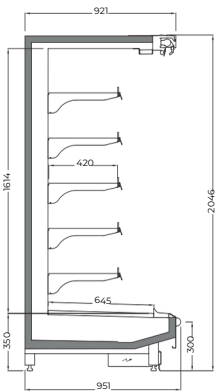


MIRRORED SIDE PANEL

TECHNICAL DATA

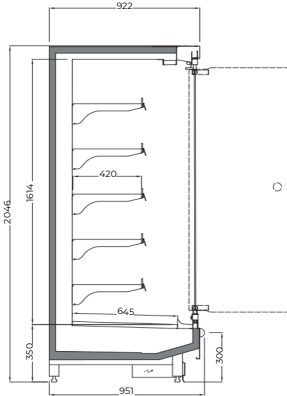
HEIGHT 2050

DEPTH 950



ONYX V3 2050 / 950

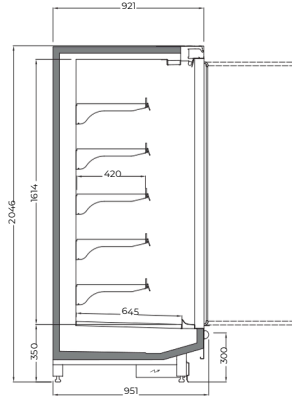
Length mm | 1250 | 1875 | 2500 | 2812,5 | 3125
3750 | 2136 (HC)



With Single Glass Doors

ONYX V3 2050 / 950

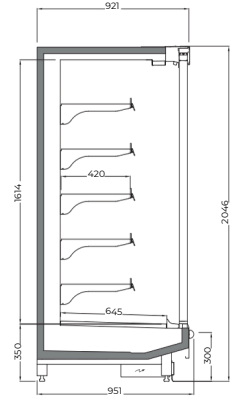
Length mm | 1250 | 1875 | 2500 | 2812,5 | 3125
3750 | 2136 (HC)



With Double Glass Doors

ONYX V3 2050 / 950

Length mm | 1250 | 1875 | 2500 | 2812,5 | 3125
3750 | 2136 (HC)

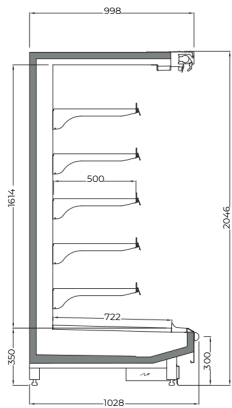


With Double Glass Sliding Doors

ONYX V3 2050 / 950

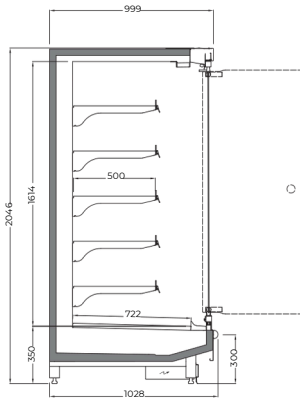
Length mm | 1250 | 1875 | 2500 | 2812,5 | 3125
3750 | 2136 (HC)

DEPTH 1020



ONYX V3 2050 / 1020

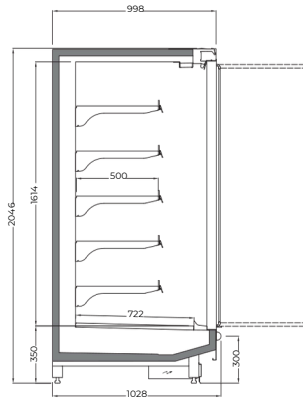
Length mm | 1250 | 1875 | 2500 | 2812,5 | 3125
3750 | 2136 (HC)



With Single Glass Doors

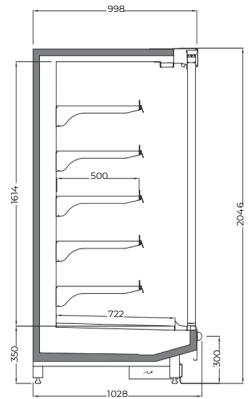
ONYX V3 2050 / 1020

Length mm | 1250 | 1875 | 2500 | 2812,5 | 3125
3750 | 2136 (HC)



With Double Glass Doors

Length mm | 1250 | 1875 | 2500 | 2812,5 | 3125
3750 | 2136 (HC)

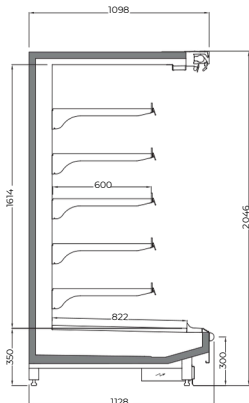


With Double Glass Sliding Doors

ONYX V3 2050 / 1020

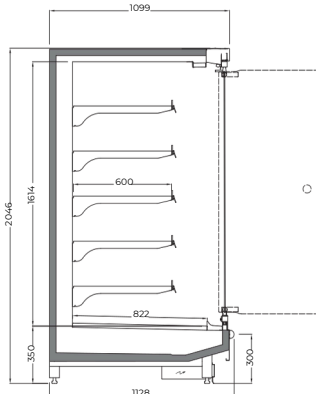
Length mm | 1250 | 1875 | 2500 | 2812,5 | 3125
3750 | 2136 (HC)

DEPTH 1120



ONYX V3 2050 / 1120

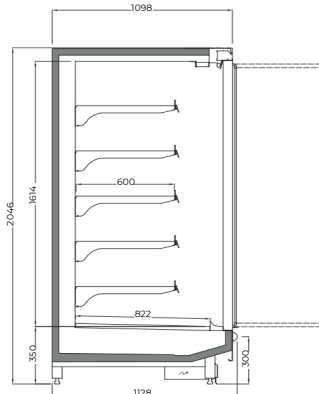
Length mm | 1250 | 1875 | 2500 | 2812,5 | 3125
3750



With Single Glass Doors

ONYX V3 2050 / 1120

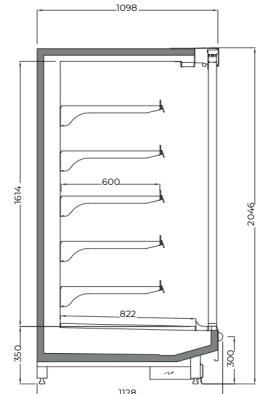
Length mm | 1250 | 1875 | 2500 | 2812,5 | 3125
3750



With Double Glass Doors

ONYX V3 2050 / 1120

Length mm | 1250 | 1875 | 2500 | 2812,5 | 3125
3750



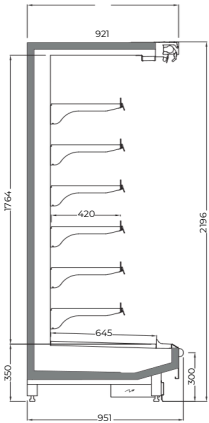
With Double Glass Sliding Doors

ONYX V3 2050 / 1120

Length mm | 1250 | 1875 | 2500 | 2812,5 | 3125
3750

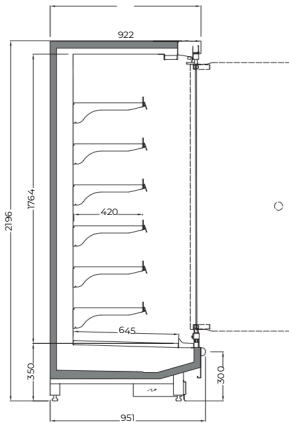
HEIGHT 2200

DEPTH 950



ONYX V3 2200 / 950

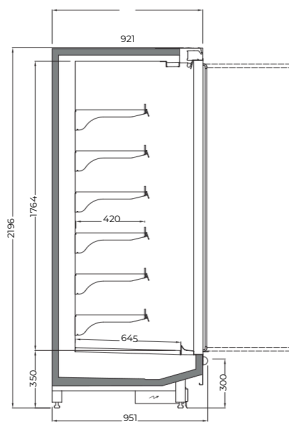
Length mm | 1250 | 1875 | 2500 | 2812,5 | 3125 | 3750 | 2136 (HC)



With Single Glass Doors

ONYX V3 2200 / 950

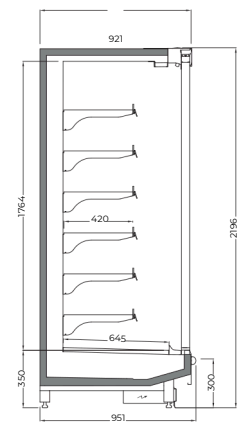
Length mm | 1250 | 1875 | 2500 | 2812,5 | 3125 | 3750 | 2136 (HC)



With Double Glass Doors

ONYX V3 2200 / 950

Length mm | 1250 | 1875 | 2500 | 2812,5 | 3125 | 3750 | 2136 (HC)

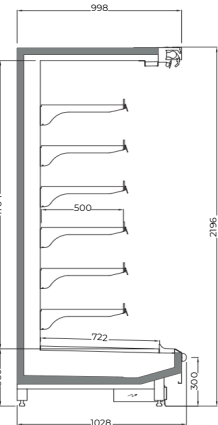


With Double Glass Sliding Doors

ONYX V3 2200 / 950

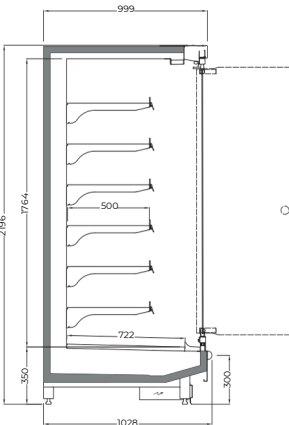
Length mm | 1250 | 1875 | 2500 | 2812,5 | 3125 | 3750 | 2136 (HC)

DEPTH 1020



ONYX V3 2200 / 1020

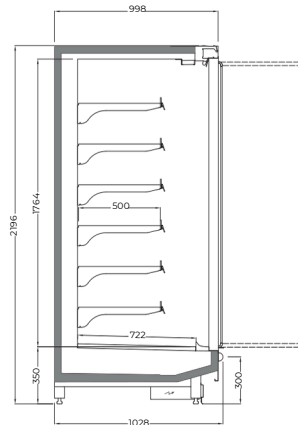
Length mm | 1250 | 1875 | 2500 | 2812,5 | 3125 | 3750 | 2136 (HC)



With Single Glass Doors

ONYX V3 2200 / 1020

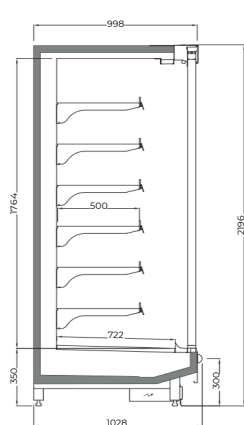
Length mm | 1250 | 1875 | 2500 | 2812,5 | 3125 | 3750 | 2136 (HC)



With Double Glass Doors

ONYX V3 2200 / 1020

Length mm | 1250 | 1875 | 2500 | 2812,5 | 3125 | 3750 | 2136 (HC)

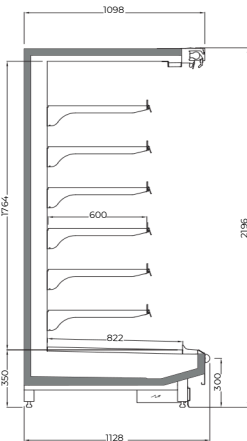


With Double Glass Sliding Doors

ONYX V3 2200 / 1020

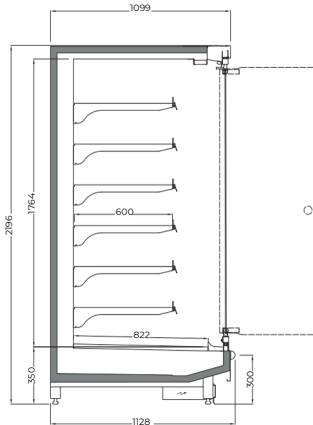
Length mm | 1250 | 1875 | 2500 | 2812,5 | 3125 | 3750 | 2136 (HC)

DEPTH 1120



ONYX V3 2200 / 1120

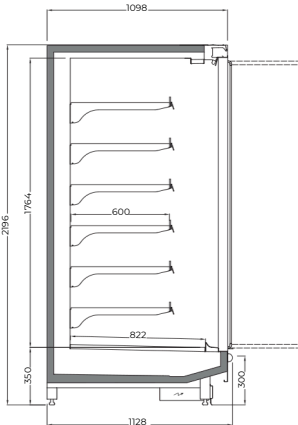
Length mm | 1250 | 1875 | 2500 | 2812,5 | 3125 | 3750



With Single Glass Doors

ONYX V3 2200 / 1120

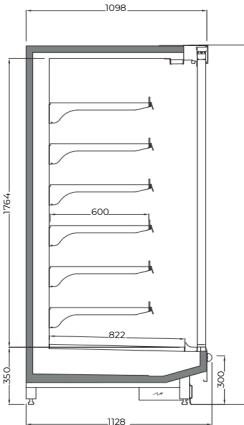
Length mm | 1250 | 1875 | 2500 | 2812,5 | 3125 | 3750



With Double Glass Doors

ONYX V3 2200 / 1120

Length mm | 1250 | 1875 | 2500 | 2812,5 | 3125 | 3750

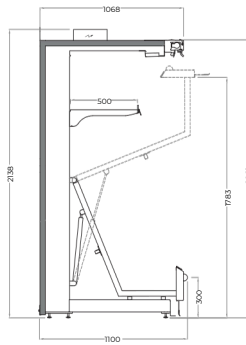


With Double Glass Sliding Doors

ONYX V3 2200 / 1120

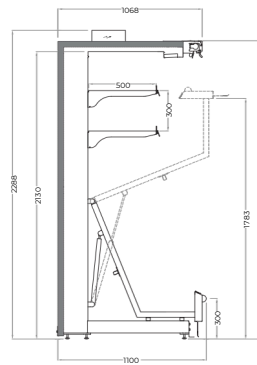
Length mm | 1250 | 1875 | 2500 | 2812,5 | 3125 | 3750

TECHNICAL DATA



ONYX V3 2050 LIFT UP

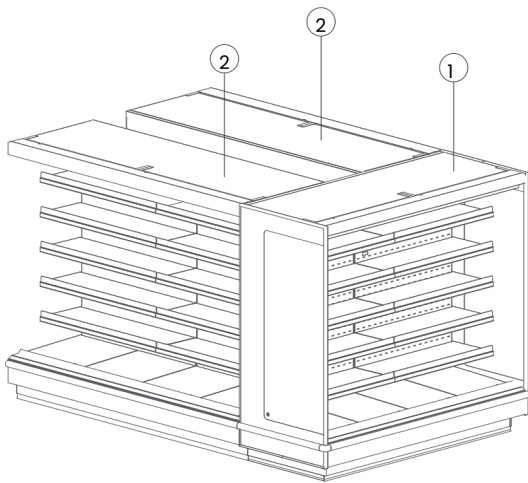
Length mm | 1250 | 1875 | 2500 | 3750



ONYX V3 2200 LIFT UP

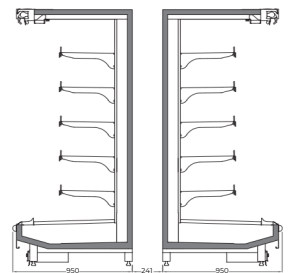
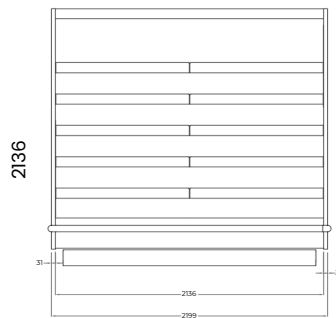
Length mm | 1250 | 1875 | 2500 | 3750

ISLAND CONFIGURATION

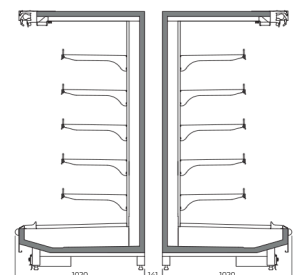
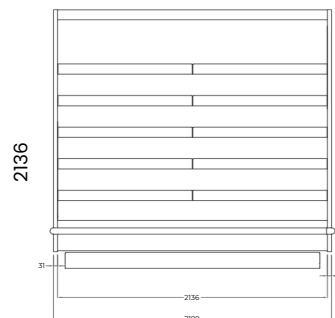


① END CASE

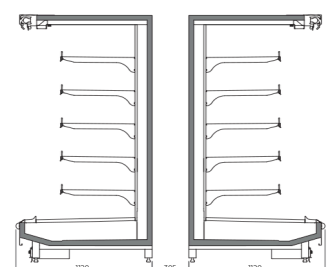
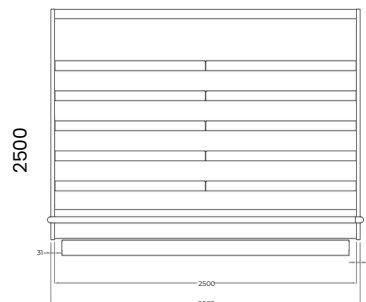
② RUN CASE



If Onyx V3 950 run cabinets are positioned back to back

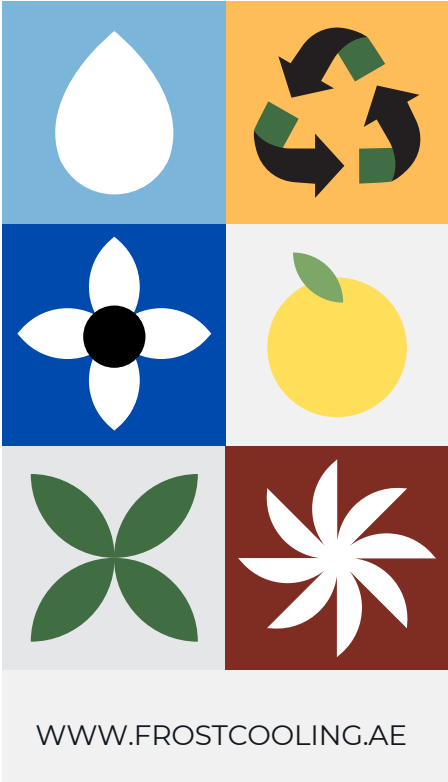


If Onyx V3 950 / 1020 run cabinets are positioned back to back



If Onyx V3 1120 run cabinets are positioned back to back

WHERE QUALITY MEETS RELIABILITY



FROST COOLING TRADING
SALES: +971 58 553 8232
OFFICE: +971 58 520 5232
EMAIL: SALES@FROSTCOOLING.AE