



# POLAR

VERTICAL INTEGRAL CABINET

# CHILLED





# POLAR

VERTICAL INTEGRAL CABINET

# CHILLED

Ecofriendly and "unique&stylish" design

High visibility & Ergonomy with lower front base and higher interior net height

Perfect alignment with POLAR FROZEN





POLAR CHILLED

POLAR FROZEN

**Benefits & Specifications:**

- Small footprint with compact design
- Easy access and ergonomic design
- Fully configurable to different concepts
- Easily adaptable to changes of product
- Reduces energy consumption with higher evaporation temperature
- Low operating costs
- Practical fittings designed for easy installation and maintenance



**Dimensions (mm):**

Height : 2098  
 Length : 1250 / 1875 / 2500  
 Depth : 830

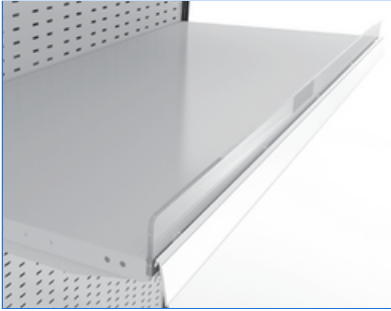
SYSTEM	OPERATING TEMP. °C	REFRIGERANT
PLUG-IN	-1 / +1* +2 / +4	HC HFC blend HFC / HFO blend

HC: R290 / R1270 • HFC: R407A / R407F / R134a / R404A • HFC / HFO: R448A / R449A / R452A / R450A

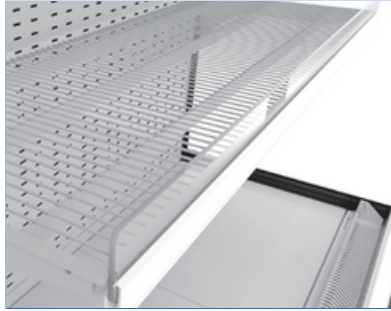
\* with doors



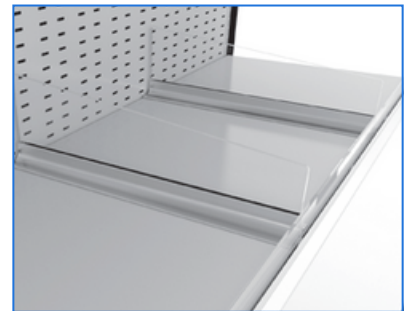
# ACCESSORIES



SOLID SHELF



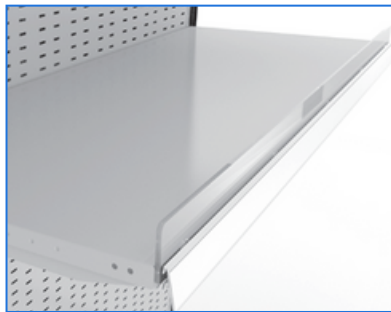
WIRE SHELF



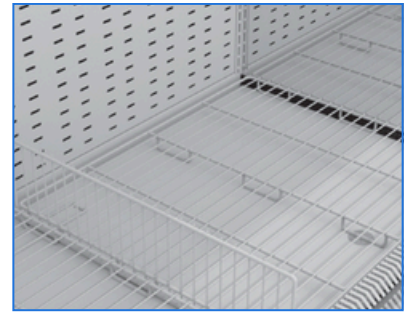
PLEXI PRODUCT DIVIDER



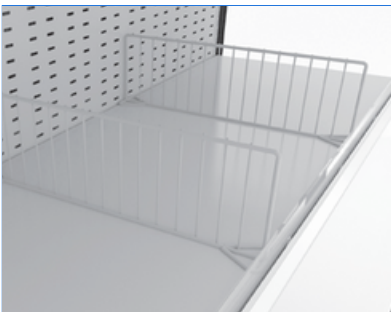
WIRE SHELF RISER



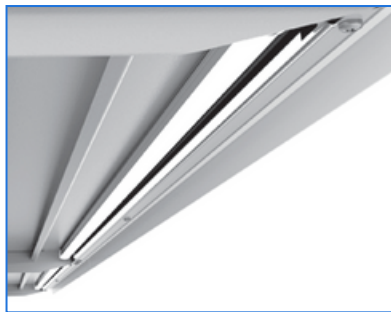
PLEXI SHELF RISER



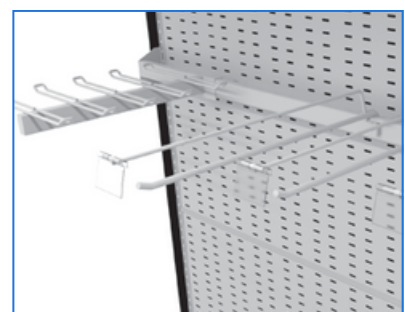
WIRE BASE TRAY  
WIRE BASE PRODUCT DIVIDER



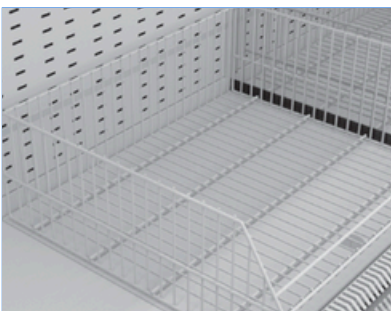
WIRE PRODUCT DIVIDER



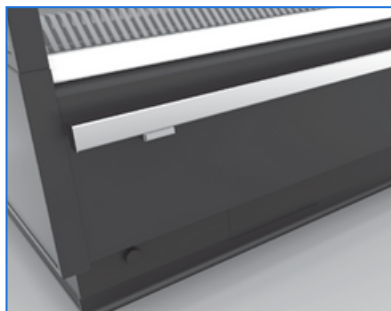
SHELF LIGHTING



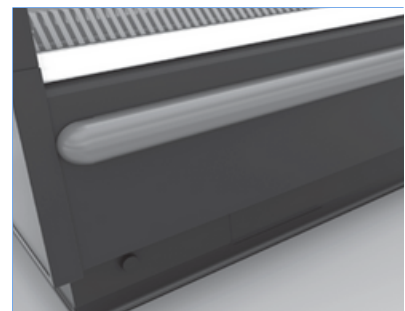
HOOK BAR



WIRE BASKET



STAINLESS STEEL BUMPRAIL



PLASTIC BUMPRAIL



CABINET UPSTAND



NIGHT BLIND



MIRROR (FV & MT)



ACRYLIC SYSTEM DIVIDE



PANAROMIC SIDE PANEL

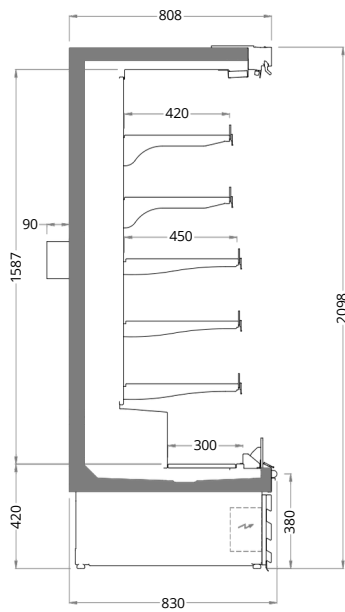


INTERMEDIATE SIDE PANEL



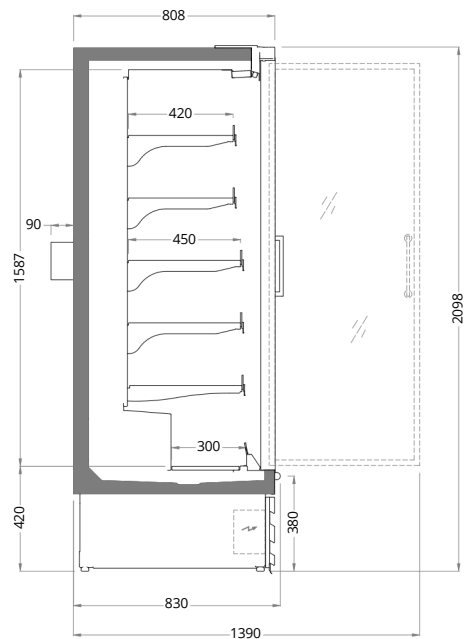
MIRRORED SIDE PANEL

# TECHNICAL DATA



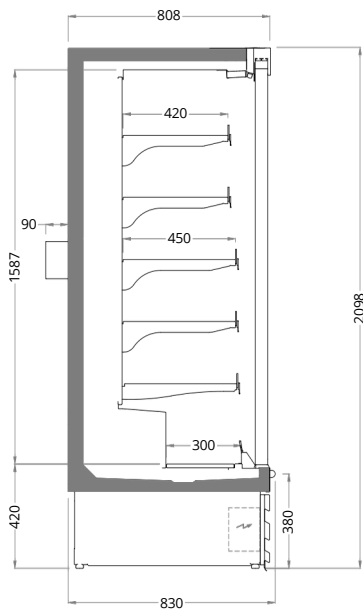
## POLAR CHILLED

Length mm	1250	1875	2500
-----------	------	------	------



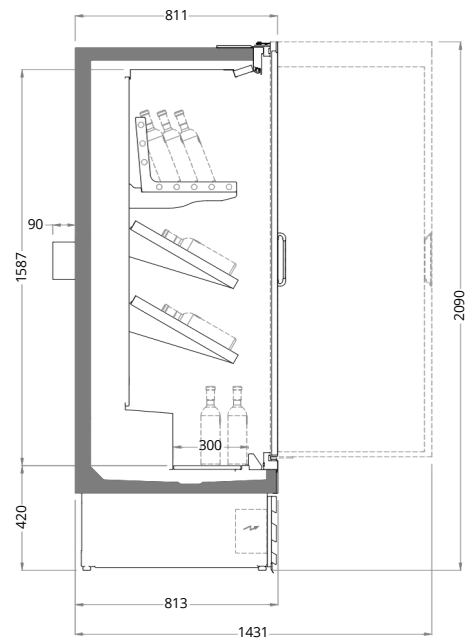
## POLAR CHILLED with Double Glass Hinged Doors

Length mm	1250	1875	2500
Doors	2	3	4



## POLAR CHILLED with Sliding Doors

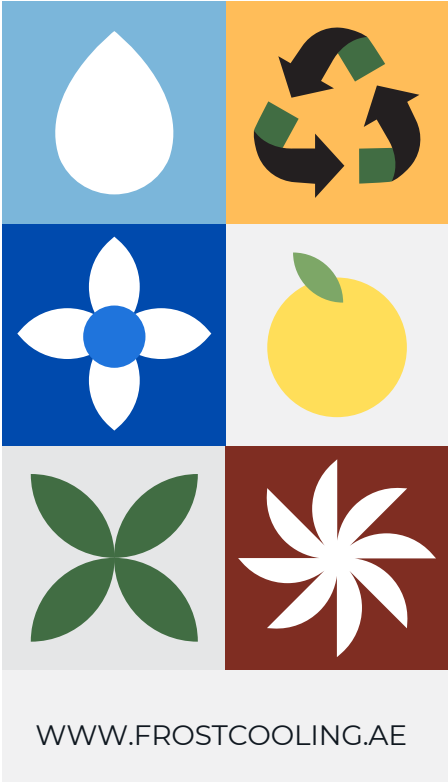
Length mm	1250	1875	2500
Doors	2	3	4



## POLAR WINE with Double Glass Hinged Doors

Length mm	1250	1875	2500
Doors	2	3	4

# WHERE QUALITY MEETS RELIABILITY



**FROST COOLING TRADING**  
SALES: +971 58 553 8232  
OFFICE: +971 58 520 5232  
EMAIL: SALES@FROSTCOOLING.AE