

POLAR

VERTICAL INTEGRAL CABINET

DUAL



POLAR

VERTICAL INTEGRAL CABINET

DUAL

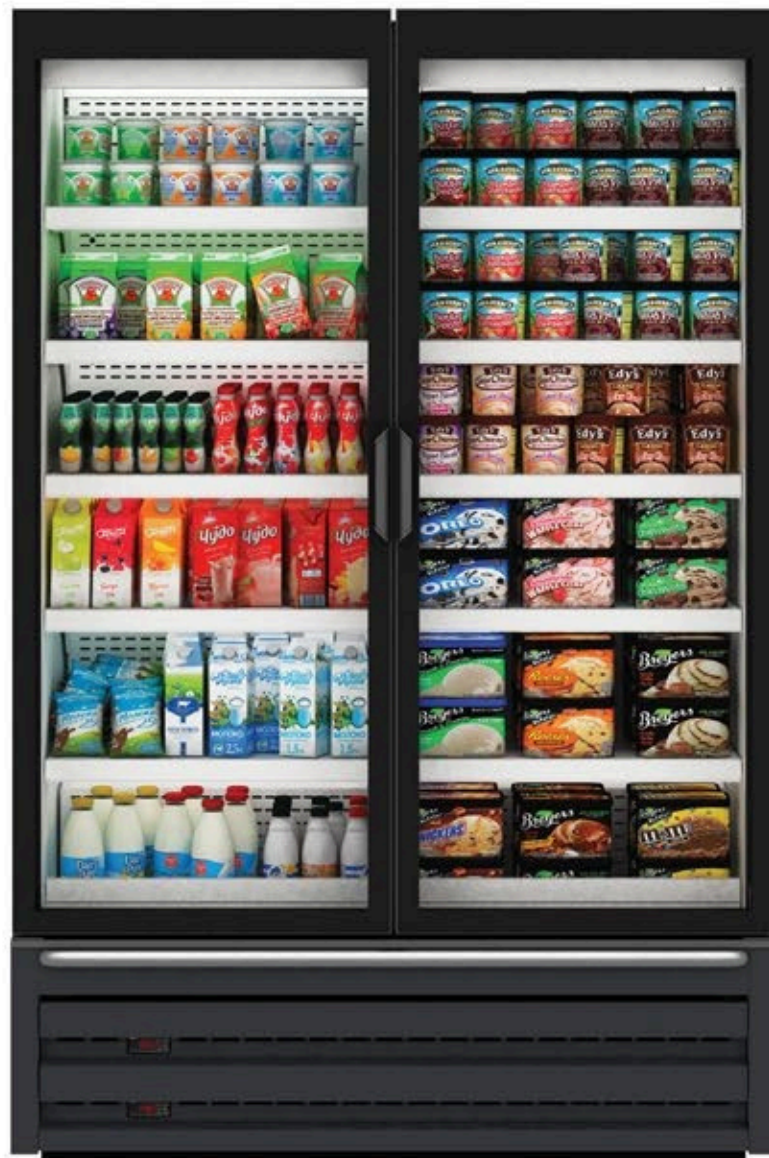


Ecofriendly and "unique&stylish" design.

Suitable to combine perfectly with other units for multi purposes.

CHILLED

FROZEN

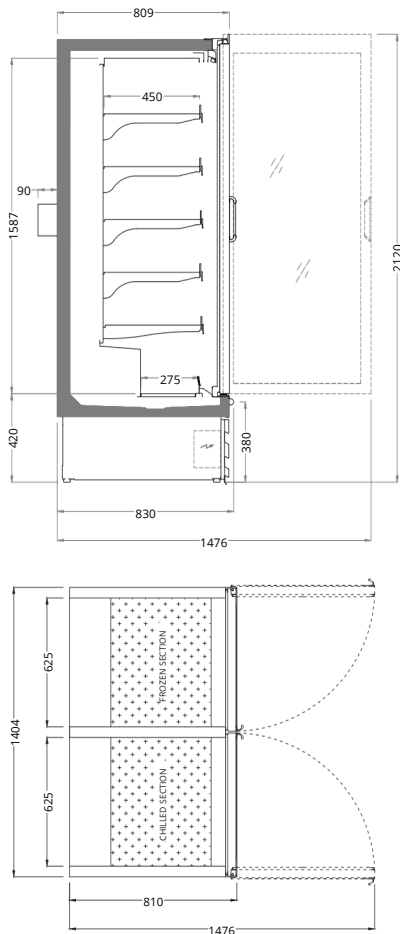


Benefits & Specifications:

- Small footprint with compact design
- Easy access and ergonomic design
- Fully configurable to different concepts
- Easily adaptable to changes of product
- Reduces energy consumption with higher evaporation temperature
- Low operating costs
- Practical fittings designed for easy installation and maintenance



TECHNICAL DATA



Dimensions (mm):
 Height : 2120 Length : 1404 Depth : 830

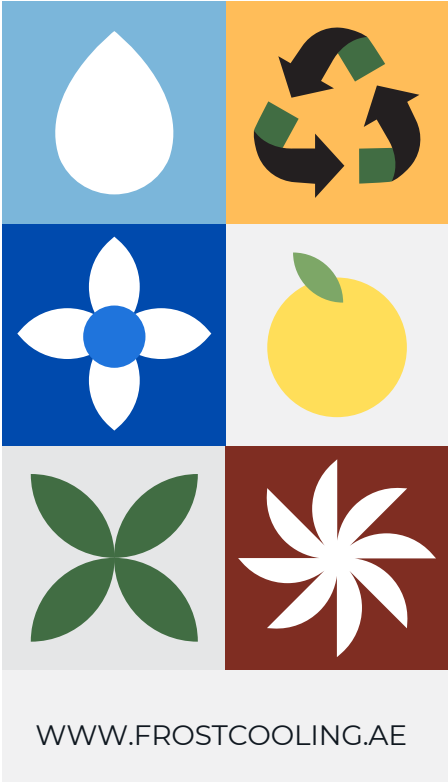
SYSTEM	OPERATING TEMP. °C	REFRIGERANT
DUAL PLUG-IN (CHILLER & FREEZER)	Chilled Section -1 / +1 +2 / +4	HC HFC blend HFC / HFO blend
	Frozen Section -22 / -24 -20 / -22	

HC: R290 / R1270 • HFC: R407A / R407F / R404A • HFC / HFO: R448A / R449A / R452A

POLAR DUAL

Length mm	1404	Bibury Dual is combined cabinet with end walls fitted.
Doors	2	

WHERE QUALITY MEETS RELIABILITY



FROST COOLING TRADING
SALES: +971 58 553 8232
OFFICE: +971 58 520 5232
EMAIL: SALES@FROSTCOOLING.AE